

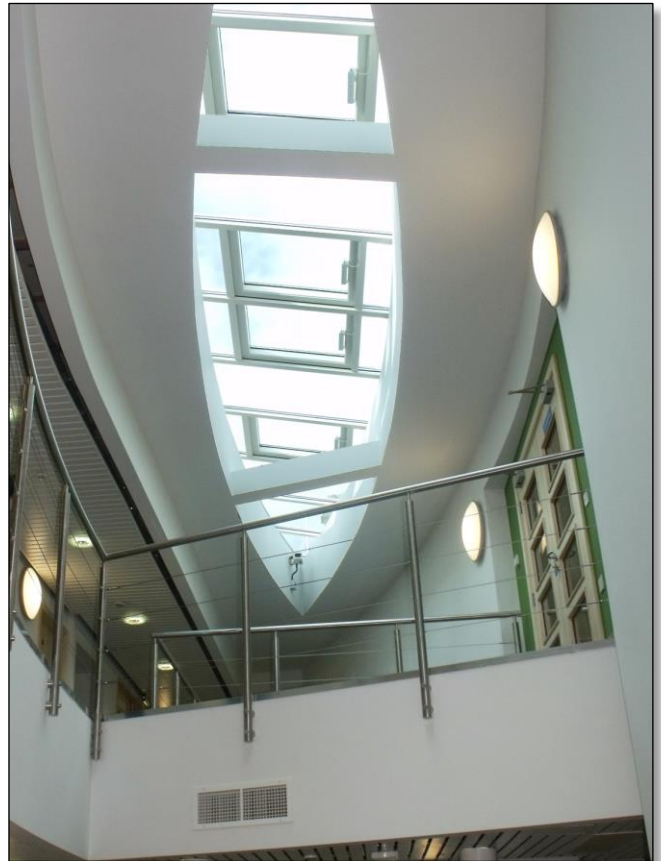


Direct Interior Solutions have been contracted by leading UK construction firms Balfour Beatty, Lend Lease and Morgan Sindall to fulfil a range of joinery services on a number of high profile projects.

Undertaken to tight programmes; yet requiring the attention to detail and high quality finish that we provide as a standard. Recent projects include the construction of the new Accident and Emergency department at Northwick Park Hospital in North London.

Containing over 280 door-sets (387 leaves) in a mixture of timber and lead lined materials, together with 70 internal timber screens and external larch cladding, this project was delivered within a very tight timescale.

Direct Interior Solutions were invited to and undertook further work at this hospital as part of the refurbishment of the Carroll Ward.



Above: Temple Bank House - Bradford Hospital

Top Right: Bradford Royal Infirmary

Middle right: Northwick Park Hospital – London

Bottom right: Northwick Park Hospital - London

Unit 5B, Howdenshire Way, Knedlington Road Industrial Estate, Howden, Goole, DN14 7HZ
T: 01757 289 600
E: info@directinteriorsolutions.com

